

7 Habits of the Successful Boomi Developer

Adam Arrowsmith, Manager, Platform Evangelist, Dell Boomi

Brian Hausmann, Integration Specialist, Cloudera



Agenda

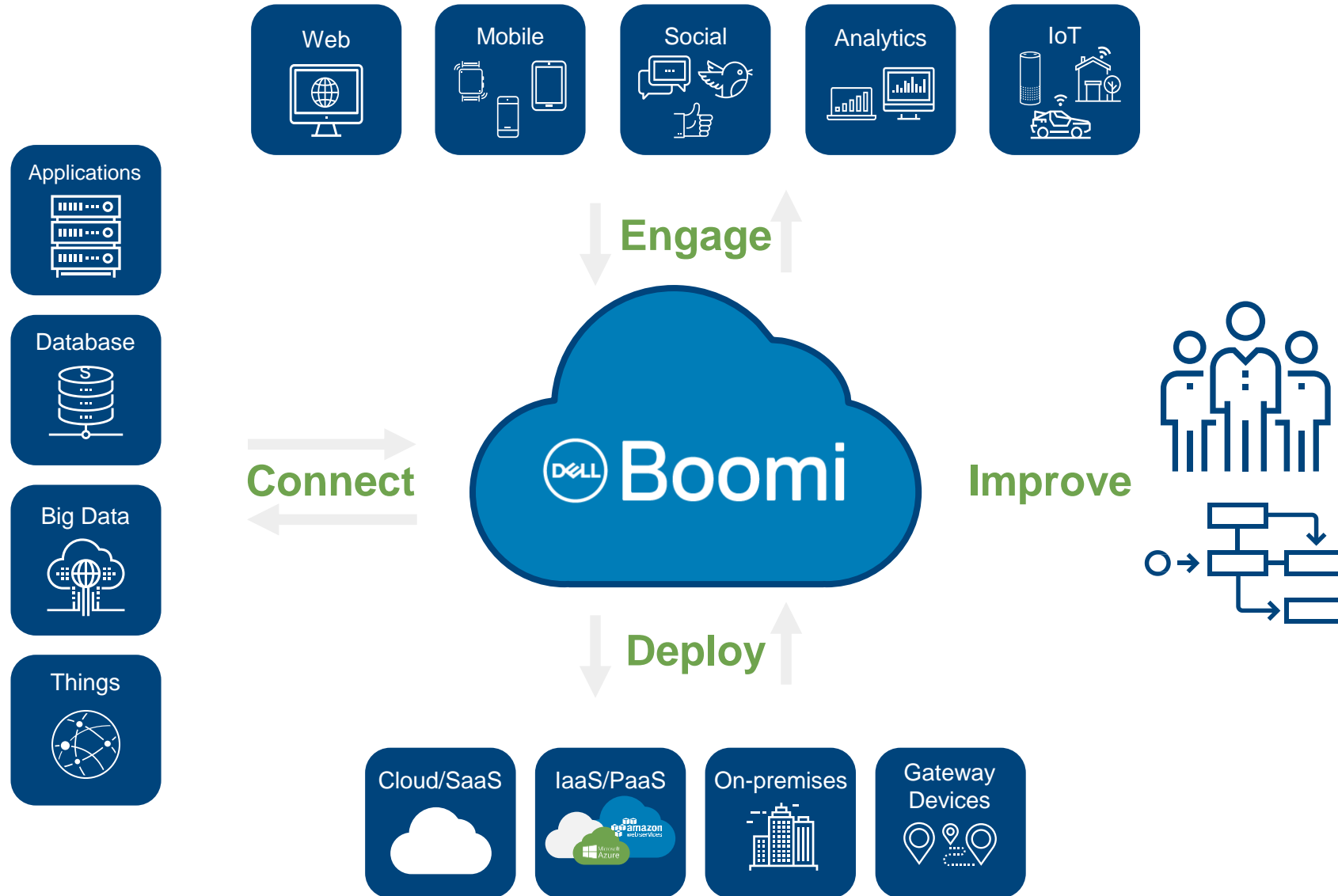
7 Habits

Customer Story: Cloudera

Wrap Up

Q&A

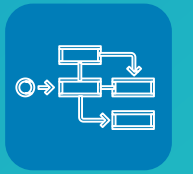
Boomi – Delivering The Connected Business





The Successful Boomi Developer

1) Creates Readable Integrations



Strategies

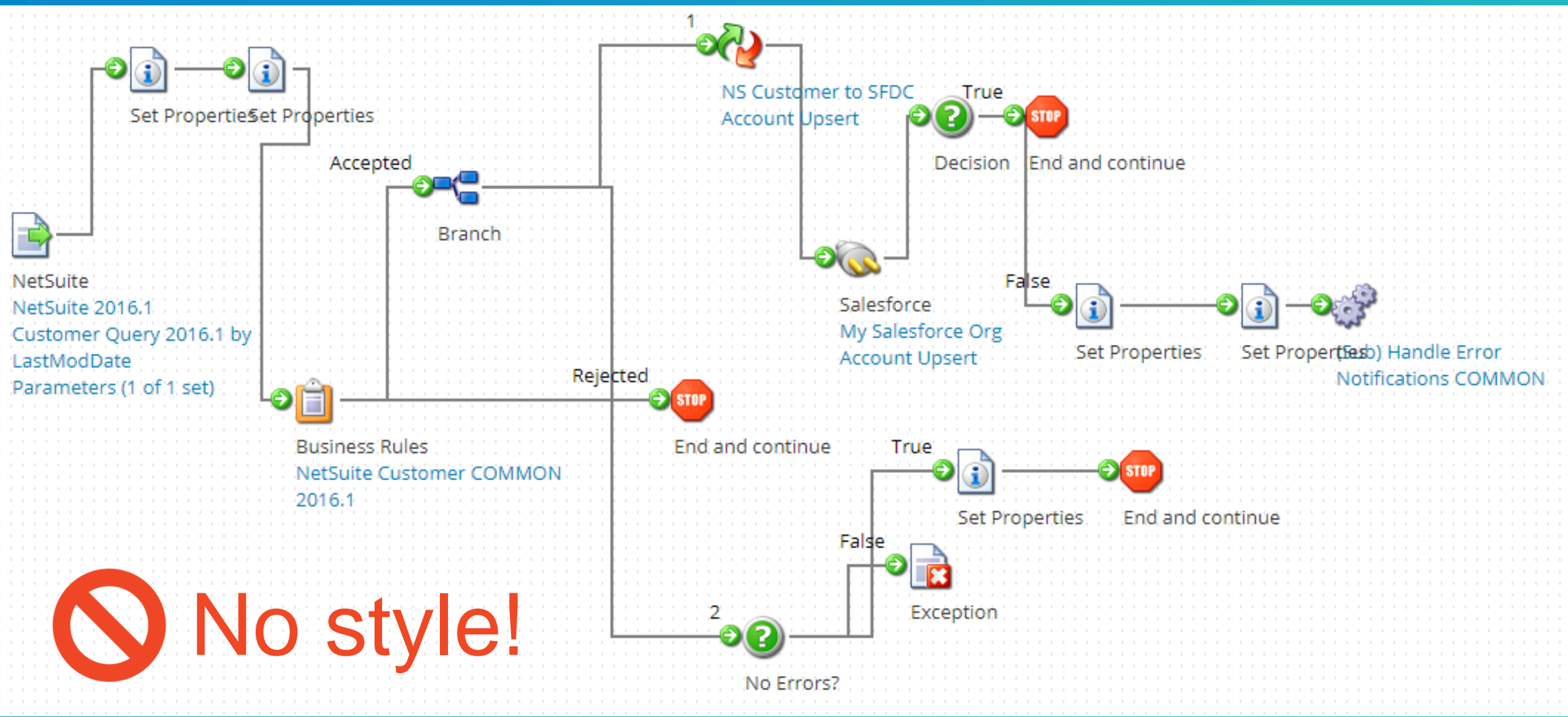
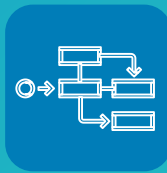
Establish and follow naming conventions

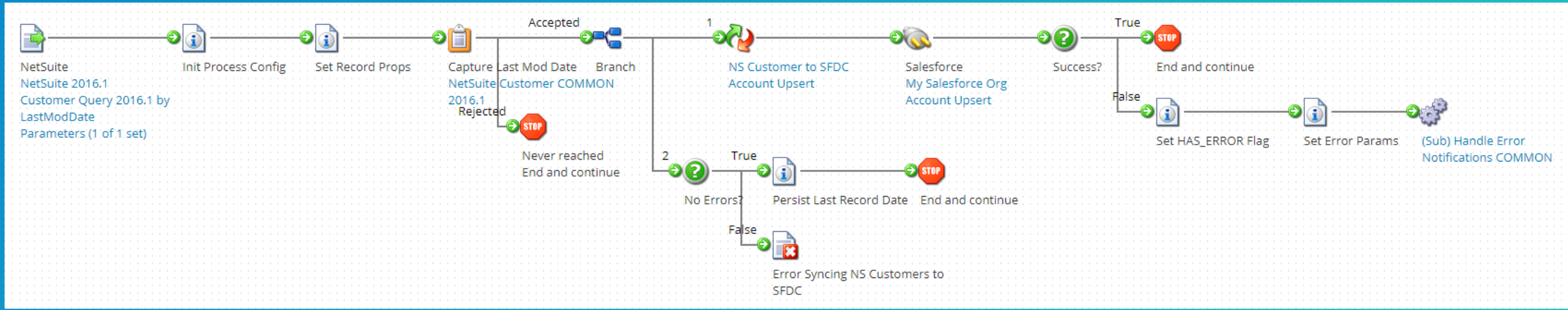
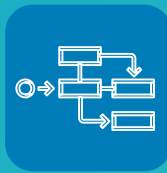
Be stylish!

Techniques

Adopt linear flow, labels component descriptions

Create patterns/templates for your team





✓ Nice style!

2) Develops Incrementally



Strategies

Test as you go

Be agile and iterate!

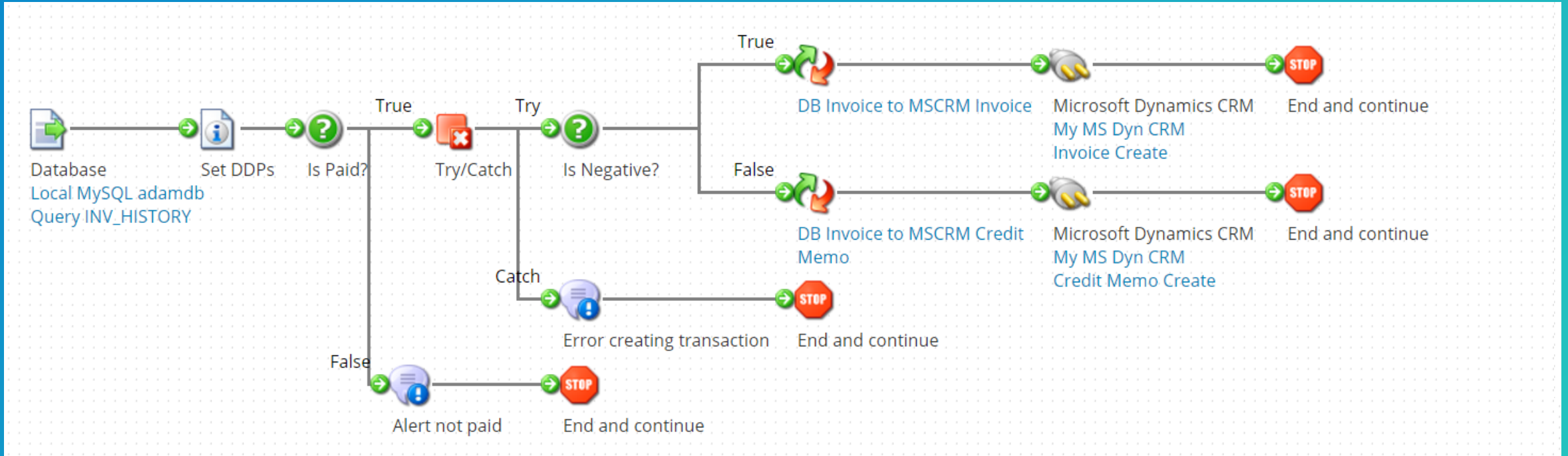
Techniques

Get good test data

Get the basic case to work

Test Mode every step

Shape By Shape...



3) Designs For Reusability



Strategies

Refactor common logic

Parameterizes common components

Search before you create!

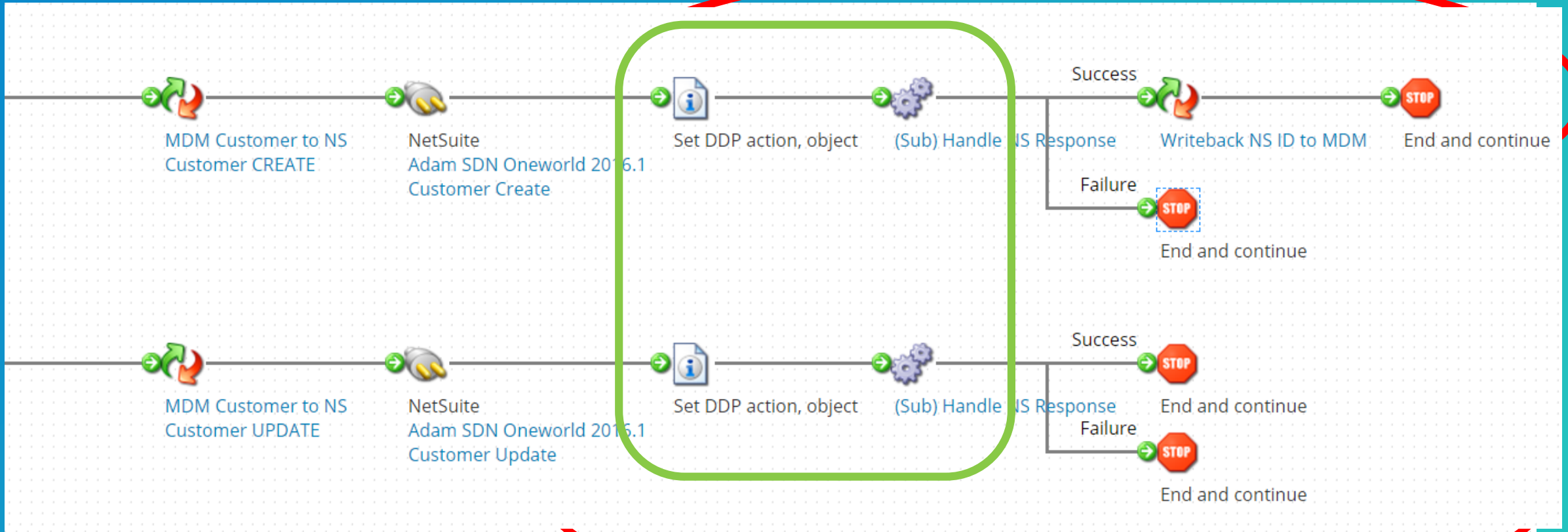
Techniques

Common sub-processes for initialization, error handling

Properties to parameterize shared components

Generic map functions

Stop...Refactor!



4) Designs For Scalability



Strategies

Load test early

“Bulkify” integrations

Choose approach based on volumes

Techniques

Test with small and large data sets

Use document properties vs. process properties

Minimize connector calls, caching

In Document Cache We Trust

The screenshot displays a mapping configuration in NetSuite. On the left, a window titled "Query INV_HISTORY" shows a tree view of fields: CUSTOMERID, INV_NO, AMOUNT, INV_TYPE, ITEM_NUMBER, LOCATION, QTY, RATE, and REPORT_DATE. On the right, a window titled "NetSuite Invoice CREATE Request" shows a list of fields: nextApprover, entity, billingAccount, recurringBill, tranDate, tranId, source, createdFrom, postingPeriod, opportunity, department, class, terms, location, @internalId, @externalId, @type, subsidiary, currency, dueDate, and discountDate. A central "Functions" pane is currently empty. A "Document Cache Lookup" dialog box is open, showing a "Name" field with the value "@internalId (Location/@intern...". Lines connect the "LOCATION" field in the left window to the "Name" field in the dialog, and the "tranId" field in the right window to the "Name" field in the dialog. At the bottom of the dialog are "OK" and "Cancel" buttons.

5) Builds Maintainable Integrations



Strategies

Use Extensions!

Decoupled designs

Techniques

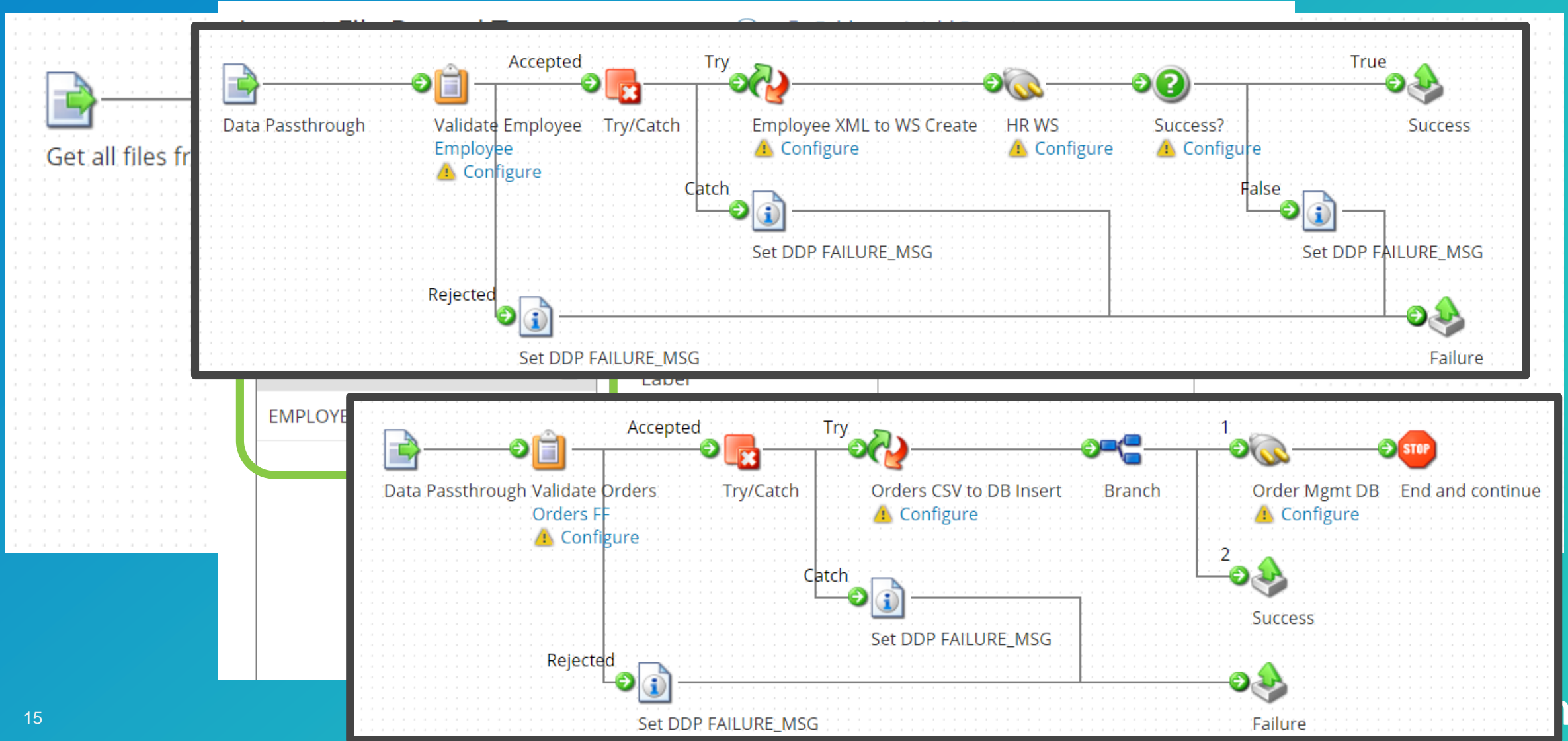
Extensions!

Process Route

Web services

Atom Queues

Process Route is the coolest feature you are not using (yet)



6) Builds Robust Integrations



Strategies

What can go wrong?

Design for retries and recovery

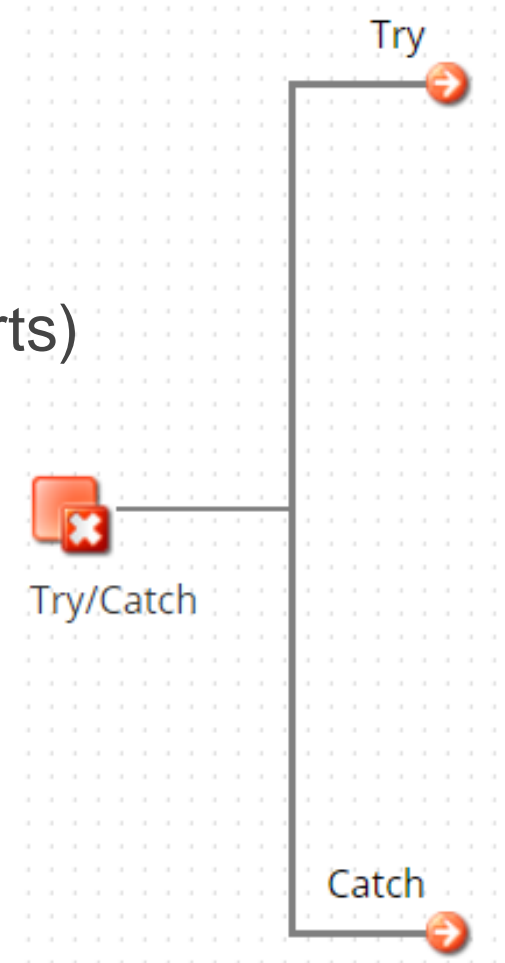
Techniques

Idempotent design (upserts)

Try/catch, common error handling routines

Targeted notifications

Document Tracking





7) Leverages The Full Platform



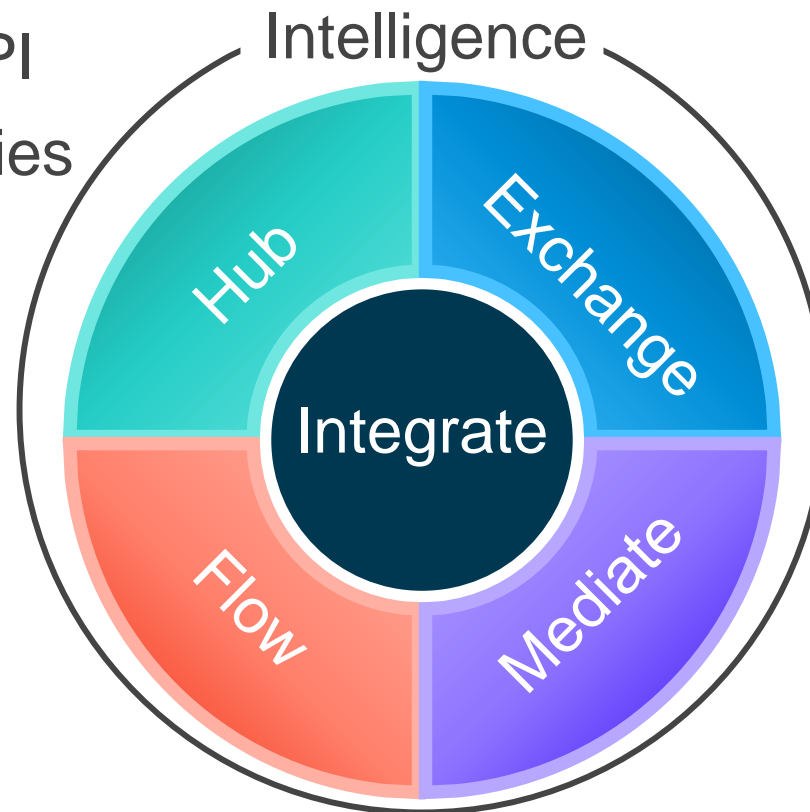
Strategies

- Explore the platform
- Automate via the API
- Use native capabilities



Techniques

- Master Data Hub for synchronization
- API Mgmt for REST
- Flow for UI, end user activities



cloudera[®]

Driving Efficiency With Dell Boomi

Brian Hausmann, Data Integration Specialist

We Deliver

the modern platform for machine learning and analytics optimized for the cloud

RUNS ANYWHERE

- ✔ Cloud
- ✔ Multi-cloud
- ✔ On-premises


SCALABLE

- ✔ Elastic
- ✔ Cost-effective
- ✔ Lower TCO

ENTERPRISE GRADE

- ✔ Secure
- ✔ Performant
- ✔ Compliant

Adoption driven by large enterprises

 1000+ customers
across all verticals

 ~500 Global 8000
customers

7/10
Top Global



BANKING

9/10
Top Global



TELCO

29
Government
customers



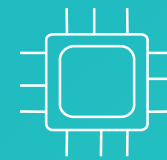
PUBLIC

6/10
Top Global



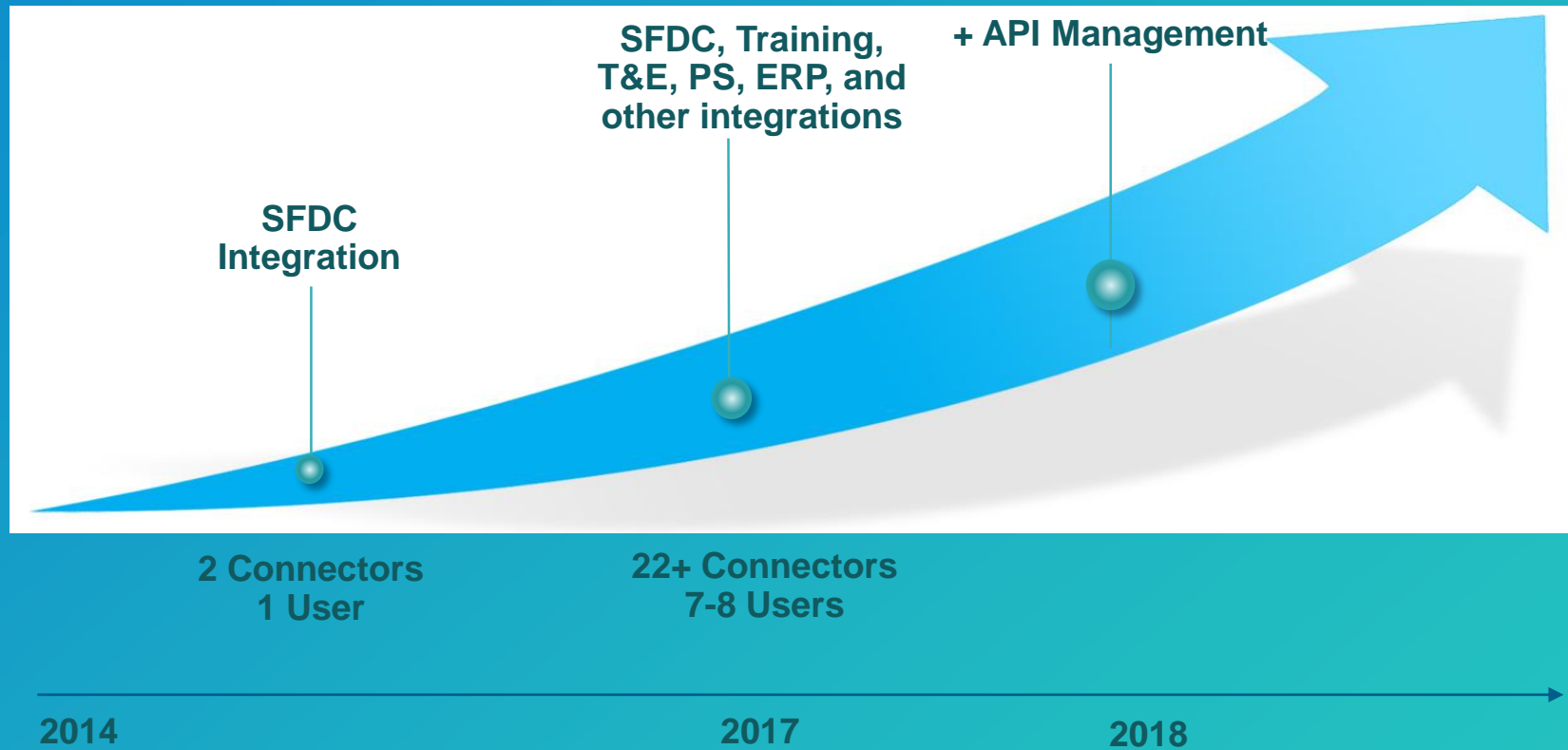
HEALTHCARE

8/10
Top Global

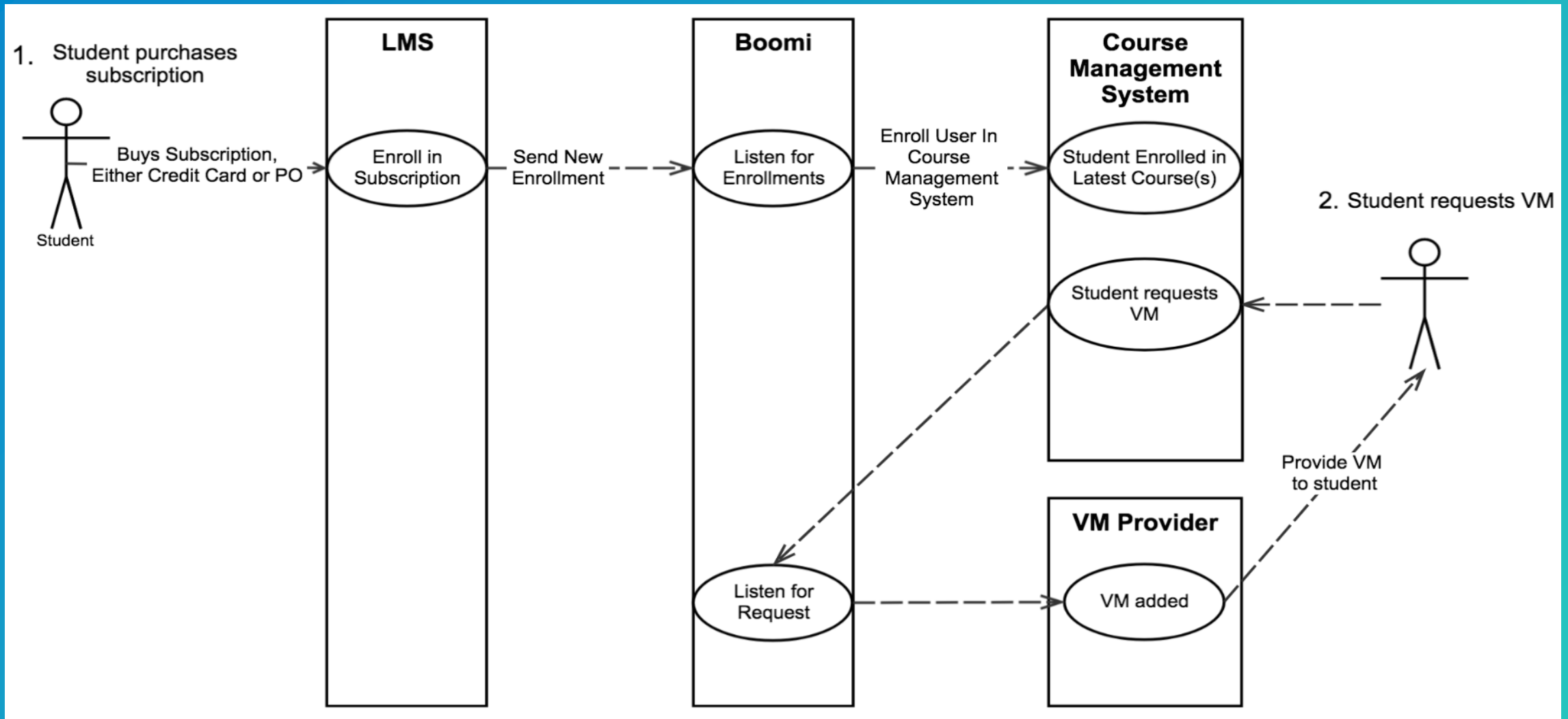


TECHNOLOGY

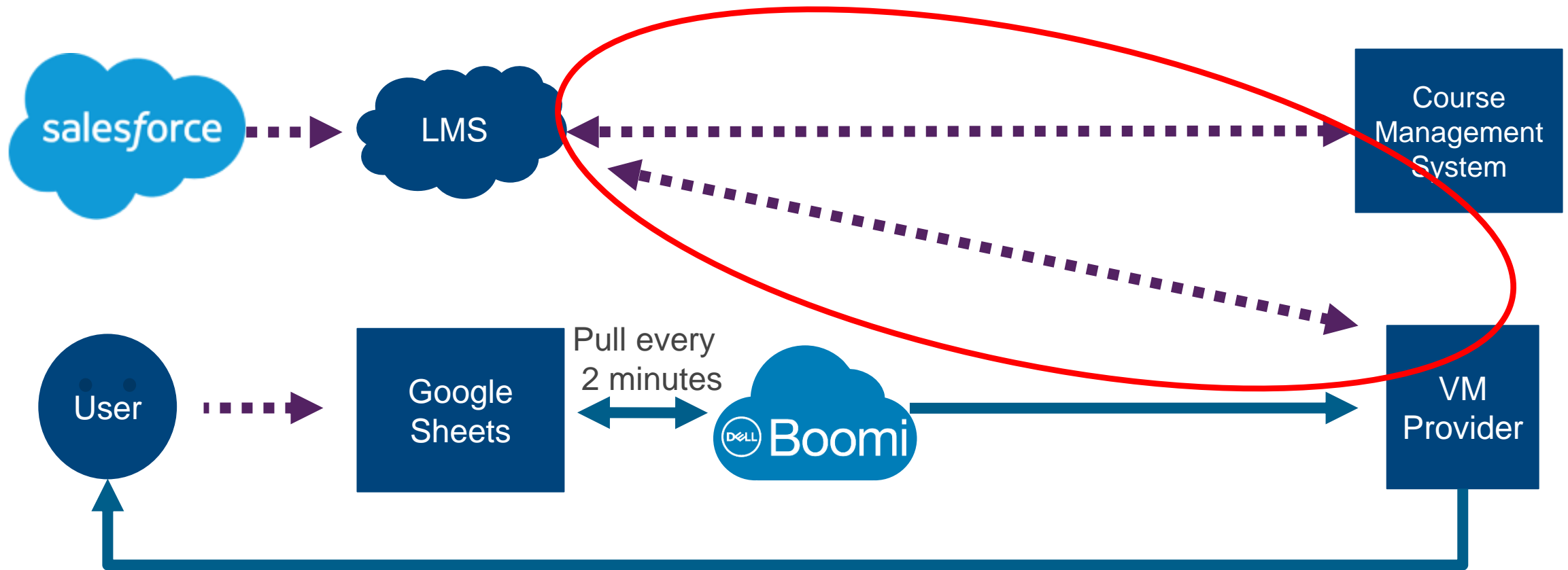
Boomi Evolution at Cloudera



Cloudera OnDemand Training Use Case



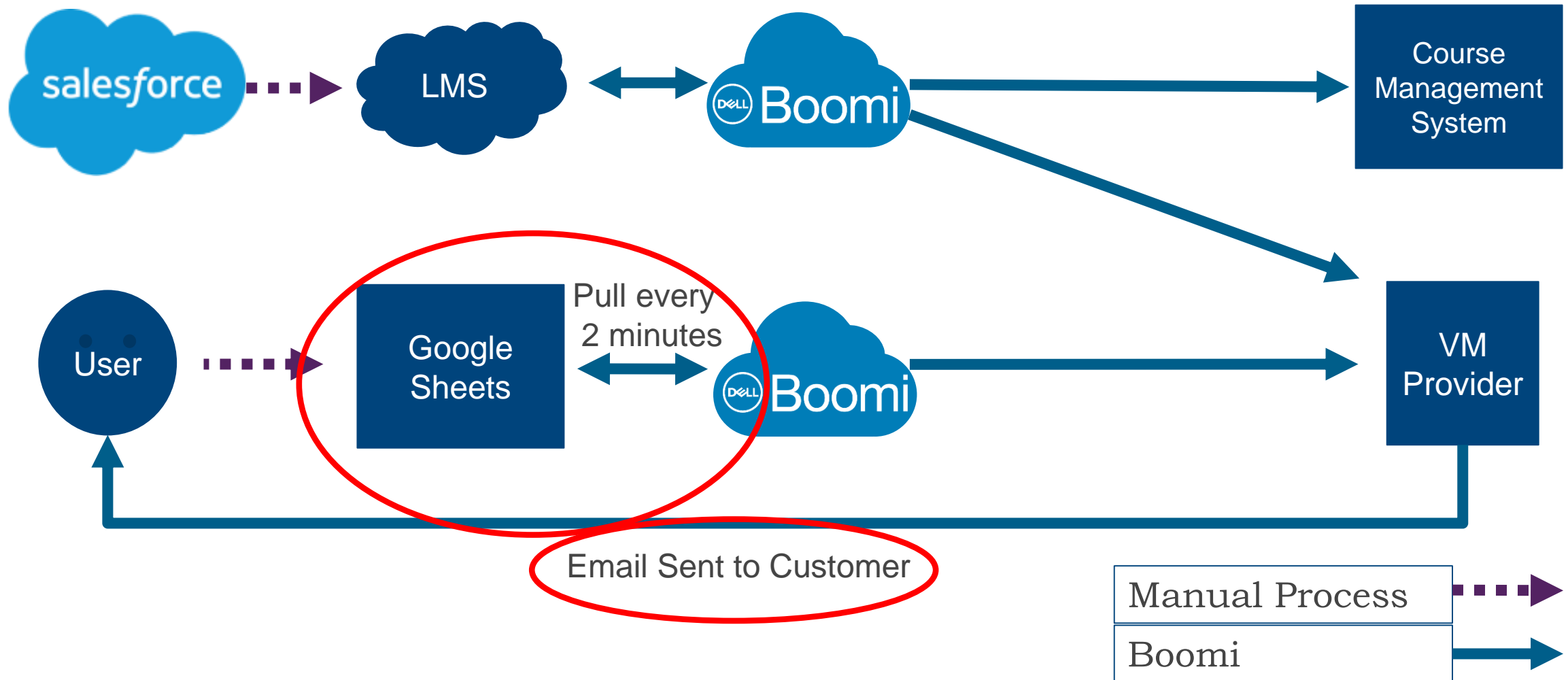
Initial State



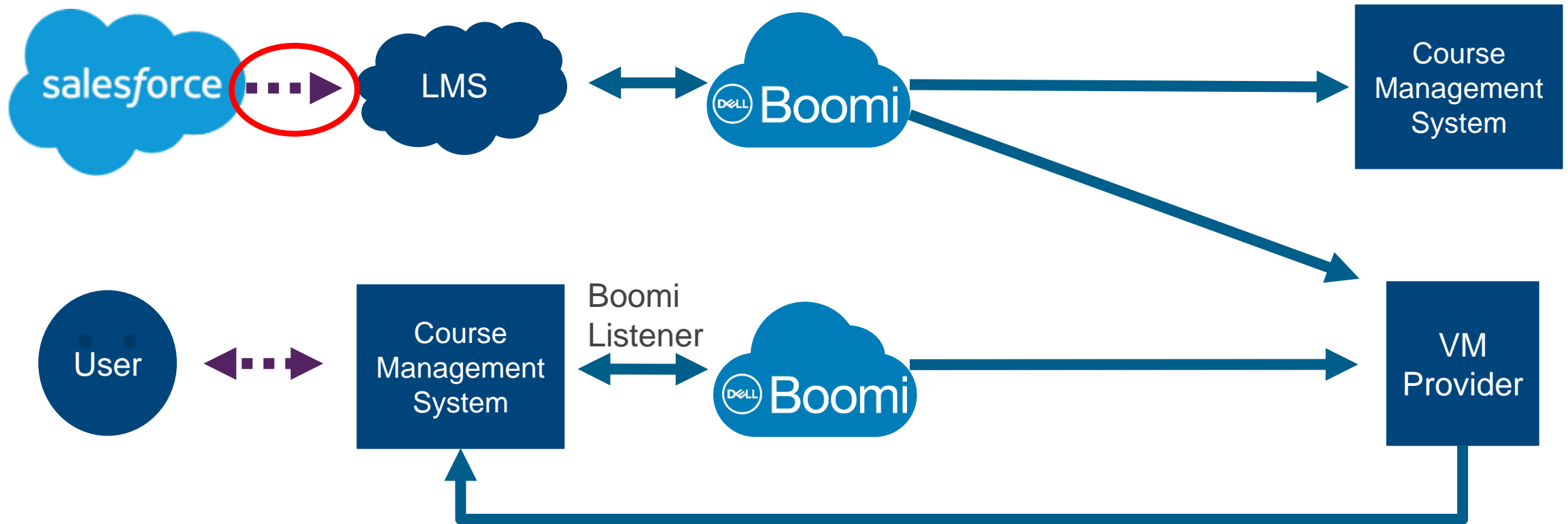
Email Sent to Customer



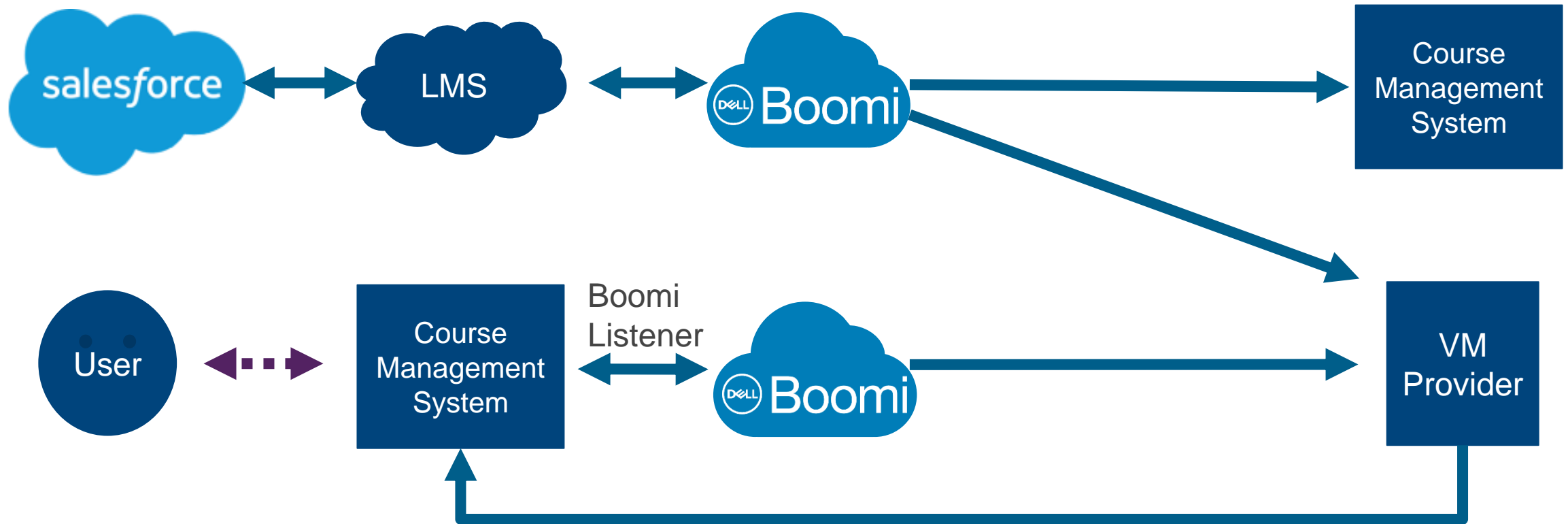
Mid State



Current State



Future State



Habits in Practice

Incremental

Tackle project in pieces

Get quick wins

Scalability

Performance and load test designs for your SLAs up front

No surprises!

Reusability

Common processes serve both OnDemand and classroom registrations

Want More Information on Cloudera or Training?

Visit our website

www.cloudera.com

Take our free courses

www.cloudera.com/training/library.html

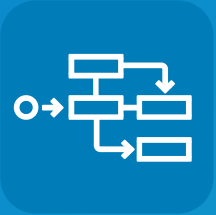
OnDemand Offering

<https://ondemand.cloudera.com/>



Wrap Up

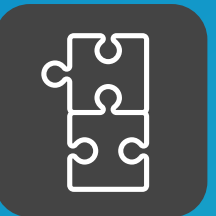
7 Successful Habits



Readable



Incremental



Reusable



Scalable



Maintainable



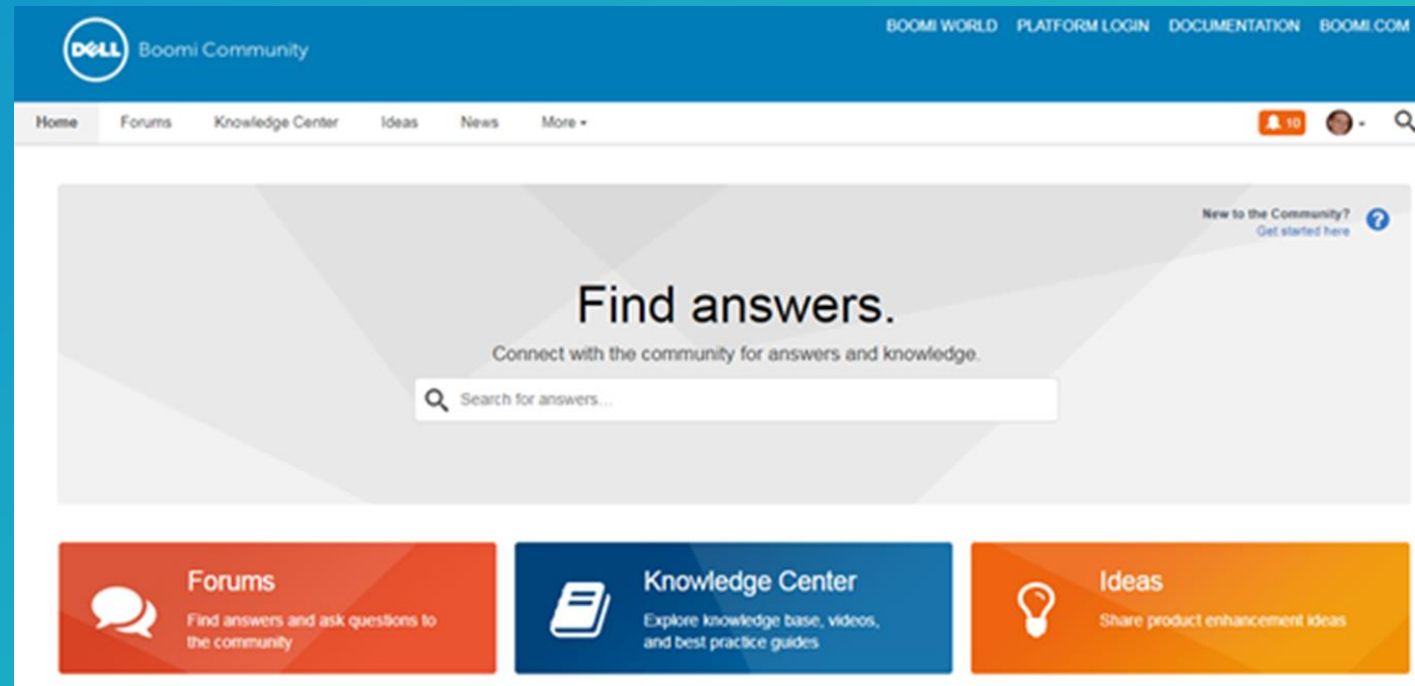
Robust



Power of the Platform

BONUS! 8) Joins The Community!

- Learn product tips, best practices, and product news
- Connect with others, online or in person
- Log in, setup profile, and join the conversation



Connected Business with Boomi Webinar Series

10AM PT | 1PM ET

WEBINAR 4

Integration, APIs and Workflow:

Extending the Value of
Your Salesforce
Investment

Wednesday,
January 31st

[Watch On-Demand](#)

WEBINAR 5

7 Habits of the Successful Boomi Developer:

Practical
Development
Strategies and
Configuration Tips

Wednesday,
February 28th

WEBINAR 6

Managing Your B2B Transactions in the Cloud:

Leverage Boomi to
modernize your
trading partner EDI
interactions

Wednesday,

[REGISTER](#)

Questions?