



Ask the Expert: EDI Q+A Session

Pooja Kachawaha, Community Events & User Groups Team, Boomi

boomi



Upcoming Community Events

Higher Education User Group Virtual Meetup

- **Date:** November 12, 2025
- **Time:** 1:00 pm EST

Join us for a discussion about leveraging the Atmosphere APIs as well as our usual networking

Developer: Document Flow

- **Date:** November 13, 2025
- **Time:** 11:30 am EST

Join Senior Integration Captain, Brad Detlefsen for “Developer: Document Flow” as part of the Enablement Series.

API Management & MCP Solutions

- **Date:** December 2, 2025
- **Time:** 1:00 pm EST

Join us to discover one of the most powerful formulas in modern integration: APIM + MCP = Agentic AI Solutions.

Upcoming Boomi World Forums



Boomi Flagship

Boomi World Forum – Singapore

November 18, 2025

Singapore

[Register now](#)



Boomi Flagship

Boomi World Forum – Paris

November 20, 2025

Paris

[Register now](#)



Boomi Flagship

Boomi World Forum – Frankfurt

November 25, 2025

Frankfurt

[Register now](#)

Jonathan Mayoh

Senior Consultant & SME
Boomi Professional Services

- Been with Boomi on the delivery consulting team since 2019
- Prior to that I was Integration Manager at a large UK logistics company and EDI Lead at Kellogg
- I provide consultancy, development and training
- I have over 25 years of API, EDI and B2B integration experience across a wide range of industries including
 - Pharmaceutical,
 - Banking and Insurance,
 - FMCG Logistics and Warehousing,
 - Manufacturing,
 - Retail,
 - Industrial Services,
 - Higher Education Sector and Automotive.



Questions





Question:

How to get expertise in EDI?





Question:

How Boomi EDI product is different from MuleSoft Partner Manager EDI product?



Question:

Better way to setup a new process (vs copying without unchecking dependent items)



Answer

| Step / Focus Area | Best Practice | Why It's Better |
|------------------------------------|---|---|
| Start with a "Template" Process | Maintain a clean, generic template process with placeholders (e.g., connection, map, profile, trading partner references) | Ensures consistency and prevents propagation of old configurations or credentials |
| Use "Copy Without Dependencies" | When copying, uncheck dependent items — reuse shared components (profiles, connections, maps) from the central library | Avoids creating duplicate versions of shared components (reduces tech debt) |
| Externalize Environment Variables | Replace hard-coded values with Process Properties, Environment Extensions, or Dynamic Document Properties | Makes new process deployment environment-agnostic and easier to maintain |
| Leverage Shared Components Library | Keep commonly used maps, connections, and profiles in a Shared Folder | Encourages reuse and consistency across processes |
| Parameterize Partner Logic | Use Trading Partner Management or Dynamic Processes (via Decision Shapes + parameter files) | Minimizes process sprawl; one template can handle many partner flows |
| Implement Versioning Discipline | Name processes with version suffixes and maintain changelogs | Simplifies rollback and dependency tracking |
| Validate via Test Atom / Sandbox | Always deploy new copies to a sandbox before production | Confirms that dependencies and environment extensions resolve correctly |

Answer

| Aspect | Boomi B2B/EDI Management | MuleSoft Anypoint Partner Manager |
|-------------------------|--|---|
| Platform Focus | Unified low-code iPaaS for app, data, API, and EDI integration | API-led integration platform with EDI + API transaction management |
| Ease of Use | Drag-and-drop, low-code EDI setup and mapping | Configuration-driven setup, more developer-oriented for complex cases |
| Partner Onboarding | Fast onboarding (hours vs weeks) via templates & self-service | Structured onboarding via configuration and reusable API assets |
| Architecture Fit | Simplifies hybrid/cloud EDI within unified Boomi AtomSphere | Integrates tightly into microservices & API-first environments |
| Standard Support | X12, EDIFACT, HL7, FHIR, AS2, SFTP, etc. | X12, EDIFACT (limited versions), AS2, HTTP, SFTP |
| Monitoring & Visibility | Centralized dashboards with real-time tracking | Advanced transaction monitoring and validation within Anypoint |



Question:

What options does Boomi provide with regard to abstracted change management in EDI formats and field specifications?



Answer

| Capability Area | Boomi Option / Feature | Value for Change Management |
|---------------------------------|---|---|
| Reusable EDI Profiles | Centralized EDI document structures (segments, loops, qualifiers) | Update once, apply globally across all maps/partners |
| Component Reuse & Libraries | Shared mappings, connectors, and transformation components | Simplifies governance; promotes consistent standards |
| Conditional Rules | “Write rules” and optional segment logic | Handle partner variations without full remapping |
| Partner-Specific Overrides | Trading Partner management console | Isolate partner differences; minimize impact on core integrations |
| Version Agility | Supports X12, EDIFACT, HL7, FHIR versioning | Quickly adapt to new or updated EDI standards |
| Low-Code Adaptation | Drag-and-drop updates + Boomi Suggest mapping assistance | Accelerates response to format changes with minimal dev effort |
| Central Deployment & CI/CD APIs | Deploy updated profiles and maps through automated pipelines | Enables controlled rollout and rollback of format updates |



Question:

Will you be supporting PEPPOL Invoicing?



Answer

Not Currently on the Roadmap for 2026



Question:

Cost for EDI, if connectors or module to be purchased + impact on costing in case of big number of customers to be integrated.

Answer

Please discuss cost with your Sales Executive / Account Manager



Question:

Do you already have the latest map for each EDI standard?



Answer

That's something we are looking to possibly target for next year.



Question:

Which are the EDI standard you support?



Answer

EDIFACT,
X12,
HL7,
ODETTE,
TRADACOMS,
USER DEFINED



Question:

How to consume 1.1 SOAP service
in boomi?

Answer

| Step | Action | Purpose |
|-------------|----------------------------|---|
| 1 | Import WSDL | Generate SOAP structure and profiles |
| 2 | Set SOAP 1.1 in Connection | Ensure protocol compatibility |
| 3 | Configure Operation | Map request/response |
| 4 | Build Process Flow | Transform data → SOAP request → Handle response |
| 5 | Add Custom Headers | For security or metadata |
| 6 | Test on Atom | Validate connectivity and payload |
| 7 | Handle Faults | Graceful error management |



Question:

How do you see the EDI exchange evolve in the next 5 years?



Answer

| Theme | What's Changing | What It Means for Enterprises |
|--|--|--|
| API-Enabled EDI (Hybrid Integration) | EDI standards (X12, EDIFACT) increasingly wrapped in REST/JSON APIs or exposed through API gateways. | Coexistence of traditional EDI with API-driven real-time data exchange. Hybrid models become the norm. |
| Event-Driven EDI | Movement from batch-based file exchange (daily/weekly) to event-based triggers using Kafka, AWS EventBridge, or Boomi Event Streams. | Faster order-to-cash cycles; near-real-time visibility for logistics, inventory, and payments. |
| AI-Assisted Mapping & Exception Handling | AI/ML models predict mappings, identify anomalies, and suggest corrections for failed transactions. | Reduces manual partner onboarding and exception management efforts by 40–60%. |
| Cloud-Native, Composable B2B Platforms | EDI moves away from on-prem translators toward API-first iPaaS ecosystems (Boomi, MuleSoft, Azure Integration Services). | Easier partner onboarding, centralized governance, elastic scalability, and reduced maintenance. |
| Self-Service Partner Onboarding | No-code portals for partners to onboard, test, and validate transactions autonomously. | Faster time-to-value for new trading partners; less IT dependency. |
| EDI Modernization via Standard Evolution | Standards bodies (e.g., UN/CEFACT, GS1) adopting JSON-LD and REST-based schemas alongside X12/EDIFACT. | Enables interoperability with digital supply chain and IoT ecosystems. |
| Integration with Blockchain & Smart Contracts | Blockchain for non-repudiation, traceability, and automatic settlement of EDI transactions. | Trusted, tamper-proof transaction histories; automated payments and compliance validation. |



Question:

Things to consider for new EDI implementation project while using Boomi API's



Answer

Focus Area

Architecture Approach

Canonical Data Model

API Gateway & Management

Partner Onboarding Strategy

Security & Compliance

Transaction Tracking & Visibility

Error Handling & Retry Design

Environment & Deployment Model

Data Governance

Monitoring & Alerts

Copyright © 2025 Boomi, LP or its affiliates.
All rights reserved.

Best Practice / Consideration

Design a **hybrid EDI + API architecture** — Boomi B2B/EDI handles traditional partner flows; Boomi APIs expose real-time capabilities for modern systems.

Define a **canonical JSON/XML data structure** that both EDI maps and APIs can reference.

Use **Boomi API Management** to expose or proxy EDI transactions (e.g., *Order*, *Invoice*) as APIs.

Centralize **Trading Partner Management**; expose **API endpoints** for onboarding or validation testing.

Enforce **API authentication (OAuth2, JWT)** and **secure EDI exchange (AS2, SFTP)** under unified policies.

Implement **Process Reporting + API-based status queries** for transaction visibility (e.g., `GET /edi/status/{id}`).

Standardize **error handling frameworks** across EDI and APIs (use Decision Shapes + Exception Handling Process).

Separate **EDI processing** and **API gateway workloads** logically (different Atoms or Molecules).

Store and manage partner configurations, maps, and profiles in **shared component libraries**.

Integrate Boomi's process reporting with external observability tools (e.g., Splunk, Datadog) via APIs.

Why It Matters

Enables gradual modernization and interoperability between legacy EDI and digital API ecosystems.

Simplifies transformations and promotes consistency across EDI and REST integrations.

Provides governance, throttling, and analytics for EDI-over-API exchanges.

Reduces onboarding time and enables partner self-service.

Ensures compliance (HIPAA, PCI, etc.) and end-to-end data protection.

Enhances operational transparency for business users and partners.

Provides consistent recovery behavior and reduces manual intervention.

Improves scalability, security, and release independence.

Supports reusability, version control, and easier maintenance.

Enables proactive monitoring of EDI/API traffic and performance anomalies.



Question:

What recommendations do you have for debugging complex maps to/from EDI? We have complex EDI <-> SAP IDOC maps that utilize map scripts and multiple map functions. A process execution does not natively include map steps activities.



Answer

| Focus Area | Recommendation | Benefit |
|--|--|---|
| Test Maps Independently | Use the Test Map tool with “Show Function Execution” enabled. | Identify failing functions or lookups early. |
| Add Intermediate Logging | Insert temp map shapes and log intermediate XML outputs. | Increases visibility through transformation stages. |
| Use Local Test Atom | Run locally and review document logs in Process Reporting . | Faster iteration and detailed output review. |
| Instrument Map Scripts | Add <code>logger.info()</code> lines in Groovy/JS scripts. | Trace variable values inside map scripts. |
| Enable Debug Mode | Use a Process Property (e.g., <code>DEBUG_MODE=true</code>) to toggle extra logging. | Activate deep logging without redeploying. |
| Validate Lookups & Profiles Separately | Test cross-references, DB lookups, and schema validation outside the main map. | Prevents data mismatches before execution. |
| Capture Input/Output Payloads | Log or save EDI and IDoc before/after mapping. | Enables side-by-side comparison and re-testing. |



Question:

Copying TP configurations is mostly form based and manually entered between environments, incredibly tedious, any advice?



Answer

Focus Area

Centralize Shared Components

Recommendation / Technique

Move common EDI profiles, envelopes, and maps into **Shared Folders** outside the TP component.

Why It Helps

Reduces what needs to be reconfigured per environment.

Parameterize TP-Specific Values

Store partner URLs, identifiers (ISA/GS), and certificates in **Environment Extensions** or **Shared Data Process Shapes**.

Lets you deploy the same TP process with environment-level overrides (no manual re-entry).

Use Boomi AtomSphere APIs

Boomi's **Platform API** allows GET/POST of TP component metadata (limited but useful). You can export/import TP JSONs between environments programmatically.

Enables semi-automated sync of TP setup and audit history.

Adopt a Template Partner Process

Create a "Partner Template" component with generic settings and dynamic references (e.g., PartnerID variable). Clone and adjust using scripts or environment overrides.

Greatly reduces manual setup time for new partners.

Maintain External Partner Registry

Keep partner metadata (IDs, endpoints, certificates, EDI types) in an **external config source** — e.g., a database or JSON file accessed via API.

Future-proofs against Boomi UI-driven duplication; allows controlled change promotion.

Automate via Scripting / Boomi API SDK

Use the **Boomi REST API** with scripts or CI/CD tools (Jenkins, Azure DevOps) to migrate TP components between environments.

Creates repeatable, auditable migrations (similar to source control).

Track Changes Outside Boomi

Maintain a simple **Excel or JSON changelog** of partner setup parameters.

Helps teams verify environment parity during deployment.



Question:

Comparing a 997 to the original payload/transaction isn't very easily done, any advice?



Answer

| Focus Area | Recommendation / Technique | Why It Helps |
|--|--|---|
| 1. Capture and Persist Control Numbers | Extract and store ISA13/GS06/ST02 (Interchange, Group, and Transaction Set Control Numbers) from both inbound and outbound transactions in a tracking table (DB or Boomi Atom Queue) . | These are the unique identifiers the 997 uses to acknowledge specific transactions. |
| 2. Build a Lightweight EDI Tracking Process | Create a Boomi process to log every inbound/outbound EDI doc to a central Audit DB or Atom Queue with: Partner ID, Doc Type, Control Numbers, Status, and Timestamp. | Forms the foundation for later matching 997s back to originals. |
| 3. Correlate 997s Using Control Numbers | When a 997 arrives, parse its AK1/AK2 segments to identify the acknowledged GS/ST numbers, then query your tracking table to find the corresponding original EDI doc. | Enables real-time acknowledgment status updates. |
| 4. Use Process Reporting Extensions | Add key identifiers (Partner ID, ST Control Number) as Dynamic Document Properties or Process Properties . | Lets you search in Boomi's Process Reporting to manually reconcile payloads if needed. |
| 5. Archive Originals for Comparison | Store original EDI payloads (post-translation) in a central repository (S3, DB, or Boomi Disk Connector) with filenames that include ST Control Numbers. | Simplifies side-by-side or automated comparison with received 997s. |
| 6. Optional – Automate Acknowledgment Matching | Build a small Boomi sub-process triggered by 997 receipt that auto-marks the related transaction as <i>Acknowledged</i> in your tracking store. | Provides visibility dashboards or reports for business users (e.g., "All 850s awaiting 997"). |



Question:

Can Boomi AI help build EDI processes yet?

Answer

Intelligent Data Mapping:

Boomi states that its AI can recognize patterns in incoming/outgoing document structures and assist in mapping fields across standards (e.g., X12/EDIFACT) and partner variations.

Error / Anomaly Detection:

The platform describes a use-case where AI “scans transaction histories to identify anomalies” (e.g., data missing, values out of range) and flags for proactive error correction.

Automated Onboarding & Setup Acceleration:

AI-enabled workflows are mentioned in the EDI offering: “Agentic AI Workflows” for adapting to business needs, and claims of drastically shorter partner onboarding times.

Recommendation / Suggestion Engines:

In the more general platform capabilities, Boomi’s “Suggest” feature uses machine-learning/crowd-sourcing to recommend mappings, transformations, connectors.



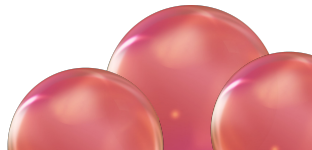
Question:

I would like to see a practical example of how the Auto-generate option is used in EDI profiles





Copyright © 2025 Boomi, LP or its affiliates.
All rights reserved.

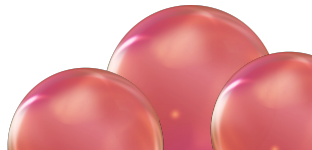




Question:

What are the emerging standards to support simpler integrations and is there a future for REST API and Web Services?







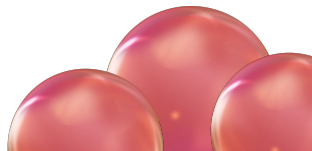
Question:

- Best practices
- Automating workflows
- Boomi's capabilities





Copyright © 2025 Boomi, LP or its affiliates.
All rights reserved.





Questions





Thank you